

BONNYRIGG PARISH CHURCH

PROFILE



**72 High Street
Bonnyrigg
Midlothian
EH19 2AE**

**Our Mission Statement:
*A Church at the heart of the Community***

**Our Vision:
*To be a growing Church, open to change,
known within the community for our compassion.***

CONTENTS

No	Description	Page
1	Introduction	1
2	Congregation	1
3	Worship	2
4	Children & Youth	3
5	Pastoral	3
6	Stewardship	3
7	Trustees	3
8	Kirk Session	4
9	Congregational Board	4
10	Church Staff	4
11	Finance	5
12	The Pitcairn Centre	5
13	Church Magazine – The Window	5
14	Church & Community Groups	6
15	Church Events	6-7
16	Our Church Buildings	8-10
17	History of Bonnyrigg Parish Church	11
18	Community Profile	12-14
19	Further Information	15

1. INTRODUCTION

Bonnyrigg Parish Church is a congregation of the Church of Scotland and is a member of Lothian Presbytery.

We are seeking a new minister following the retirement of our previous minister after 27 years' service. The Presbytery of Lothian has given Bonnyrigg Parish Church permission to call a minister without restriction.

We are looking for someone to share and develop our vision of mission and outreach and help us to encourage more families and young people to be part of our Church Family.

Bonnyrigg Church lies towards the north end of the High Street with its four-faced clock tower being seen from all directions. Our Pitcairn Centre is well known throughout the Parish and our Church Halls, located just across the road from the Church, are much sought after by community groups.

We can offer our new Minister:

- Commitment to working together to build the church and serve the community.
- Practical and active support.
- A committed group of regular worshippers.
- Friendship, fellowship and dedication to carry out God's work.
- A willingness to embrace change

We seek from our new Minister:

- Collaborative leadership.
- Challenging and relevant worship to appeal to all.
- Someone who will work with us to engage those of all ages and circumstances.
- Good communication skills.
- Someone who is open-minded and a good listener.
- Someone who will share and develop our vision of mission and outreach to the community and beyond.
- A commitment to working together with other churches in the area.

The Kirk Session has voted to depart from the historic and current doctrine of the Church of Scotland in relation to human sexuality and its application to ministers and deacons of the church.

2. CONGREGATION

The number on the roll as of December 2018 was 578 members which includes two adherents. We strive to be a friendly and welcoming church within the community.

The Congregation's vision is to create a focal point within the community through the Pitcairn Centre, drawing people from far and near to the many social groups that make use of the halls, and thus towards the Church.

3. WORSHIP

Sunday morning worship takes place at 10:00am & 11:30am during the winter months (October – May); our DJ Club (Sunday School) is held alongside the early service, with our young children participating in the first part of the service.

During the summer months (June to September), the service times are 10:00am & 11:00am. The early service is followed by a time of fellowship over a cup of tea/coffee in the Pitcairn Centre.

There are on average of 165 people attending each Sunday.



Worship is supported by a printed Order of Service & Intimations.

Communion is celebrated on the first Sunday of February, June & October.

Our organist supports our worship by playing our Allen electronic organ or the piano.

A loop system for the hard of hearing is installed.

We join with other local congregations for Holy Week and Easter Services. There is also a slide show reflection running in the Louden Hall during the mornings of Holy Week.

Harvest Thanksgiving is celebrated each year, gifts of food and money are collected from the congregation, community and local retail outlets and distributed to appropriate charities.



The Minister joins other local clergy at the War Memorial each year to conduct the Armistice Day Service. Many members of the congregation join with the community for this service.

At Christmas we hold a number of special services including an evening Candlelit service and a morning worship service involving the DJ club reminding us of the Nativity.



The priorities in our worship life are to praise and glorify God in all that we say and do, and that all who enter through our church doors are made to feel welcome.

4. CHILDREN & YOUTH IN OUR CHURCH

We have a dedicated team of leaders who look after the children in the DJ Club (Discovering Jesus) on a Sunday morning; the lessons are introduced in the Ministers children's address each week and are continued over in the Halls during the early service.

The church youth group meets on the evenings of the 2nd and 4th Sundays of the month and involves leaders and youth from neighbouring churches.

Lasswade Primary School: The Minister is a regular visitor to the school and the Church hosts the children's Christmas service each year.

The Minister serves as chaplain to the local BB company on a rotational basis with other local clergy. The Minister is also a regular visitor to the 51st Company Section to conduct Bible class with the boys.

5. PASTORAL

Each Elder has a district whose members are visited at least three times per year. The minister also receives a visit at these times.

Elders are appointed to visit the various church groups, offering our support to them and to report back to the Kirk Session on an annual basis.

The Flower team liaise with the Minister and ensure that the flowers from the church are distributed, with a card, to members either to mark a special occasion or to acknowledge and show support through illness or bereavement

6. STEWARDSHIP

The congregation is encouraged to support the work of the local church and the wider work of the Church at home and abroad through a regular Stewardship programme.

Our March "Month of Commitment" is part of our ongoing Stewardship.

7. THE TRUSTEES

The Trustees comprises the Eldership and Congregational Board Members.

The Trustees Annual Meeting, to which all the Congregation is invited, is currently held prior to the Kirk Session meeting in March.

8. KIRK SESSION

Bonnyrigg Church has a Model Deed of Constitution our Congregational Board support the day to day administrative matters of the church whilst the Kirk Session supports the Minister with the Spiritual wellbeing of the Congregation.

The Kirk Session currently has 58 elders, the most recent being ordained in 2015. There are 34 women and 24 men – ages ranging from 40 - 80.

At present, meetings of the Kirk Session are held on the first Wednesday of the month, in March, May, October & December.

Our **Christian Outreach Group (COG)** develops outreach to the community and supports the Minister with initiatives designed to support congregational growth.

9. CONGREGATIONAL BOARD

The Congregational Board consist of all Elders, plus Congregational representatives who are appointed on a three-year rotation. There are in total 45 women and 26 men.

We have active and supportive **Finance** and **Property Committees** looking after the respective areas of Church life; they meet prior to each Board meeting.

The Congregational Board meets five times per year on the first Wednesday of the month: in February, April, June, September & November.

The Congregational Board members are divided up into nine duty teams to provide support on a Sunday morning, welcoming members and guests at the church door, uplifting the offering, as well as counting and banking the offering.

10. CHURCH STAFF

We employ four members of staff to support the work of the church.

Church Officer – who looks after the church and minister on a Sunday morning.

Church Secretary – who is responsible for various clerical and administrative duties, manning the office each Thursday morning.

Church and Hall Cleaners – ensuring our premises are kept clean and tidy for Sunday worship and the daily use of the halls.

11. FINANCE

Ministry and Mission: Bonnyrigg continues to support fully the wider work of the Church of Scotland and contributes to the National Stipend Fund. In 2018 the congregation contributed £67,879 to the Ministries and Mission account and will be called upon to contribute £71,345 during 2019.

Special Collections: Special collections made at the Harvest Thanksgiving service (cooking pot) and over the Christmas period are distributed to worthy causes.

Christmas Fair: We have for a number of years hosted a successful Christmas Fair on the last Saturday in November. The proceeds from this are either allocated to specific church needs (i.e. Fabric project) or distributed to community groups or national charities.

Income

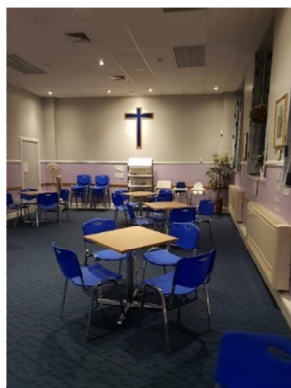
Our general fund is funded from regular giving, tax recovered on gift aid, and contributions from groups that use the Halls. Our annual income less expenditure generally breaks even or results in a small surplus.

Our CHEAR reserve, which is funded from the net proceeds from the Pitcairn Centre supports larger fabric or equipment purchases or is available for emergencies.

Whenever a specific financial need has arisen for Bonnyrigg Parish Church the congregation has risen to the challenge.

The 2017 Financial Accounts are available on request, the 2018 Accounts will be available from the end of March 2019.

12. THE PITCAIRN CENTRE



The Pitcairn Centre was opened in September 1994, offering tea, coffee and fellowship to all who come in. Hot and cold filled rolls are offered on a Thursday.

It is staffed by volunteers and is open 6 days per week, Monday to Saturday.

The net proceeds from the centre are transferred to the CHEAR reserve fund each year, which is maintained to fund larger fabric or equipment needs of the Church.

13. CHURCH MAGAZINE – The Window

We publish our own church magazine, The Window, nine times per year featuring articles and news from the parish and community groups.

The magazine is prepared, printed and collated internally, through a dedicated magazine team, and it is then distributed to each member's home by the magazine distribution team. Copies are also sent to the local library, as well as the local GP and Dental surgeries.

14. CHURCH & COMMUNITY GROUPS

CHURCH GROUPS

The Church hosts many groups both daytime and evening, including:

The Guild
Badminton: Adult & Senior
Carpet Bowling Club
Men's Fellowship
Monday Dancing
Hill Walking & Ramblers



There are also a number of uniformed youth groups
51st Boy's Brigade (This is a town company, which meets at the local schools)
5th Bonnyrigg: Monday - Brownies & Rainbows
5th A Bonnyrigg: Thursday - Brownies & Rainbows
5th Bonnyrigg Guides: Friday

COMMUNITY GROUPS

In addition, the Church Halls are home to a number of community groups including:

Bonnyrigg Brass Band; Cheekoze Club; Tai Chi; Karate; Tae Kwon Do;
Helen O'Grady's Drama Group; Ceilidh Dance Group; HeadRest Relaxation;
Local History Society; Women's Well Being Group.

15. CHURCH EVENTS

The Church has successfully hosted many varied events including:

Big Coffee Morning
Flower Show (Annual)
Big Sing
Christmas Fair (Annual)
Quiz nights
Silent Auction - Cheese & Wine evenings
Church Dances / Ceilidhs

There have also been Church day trips and short break holidays organised over the years

Events Album

Flower Show



Quiz Evening



Summer Teas



Big Coffee Morning



16. OUR CHURCH BUILDINGS

Church:

The Church was built in 1845, with the gallery being added in 1879, it has been regularly maintained to a good standard. We have fixed pews, able to seat 400 people.



At the entrance there is a beautiful etched glass window portrayal of the Holy Spirit in the form of a dove as well as a memorial to those who were lost from the town during WW1.



The church is painted with warm colours giving a comfortable environment for worship. There also banners and pictures reminding us of our faith, the most noticeable being a large hand-made wall-hanging depicting the Last Supper.

Disabled access is available via the side entrance to the Church. To the rear of the church there are toilets, a small meeting room / kitchen and the vestry. Above this is the Ross MacRae Hall which can hold approximately 50 people and is used regularly for the creche on a Sunday morning.

Church Halls:

The Church Halls were originally built in 1845, being used as both church halls and the free church school.

In 1994, the halls underwent a major refurbishment and extension programme, culminating in the opening of the Pitcairn Centre.



We have two large halls the Loudon Hall complete with stage and the Pitcairn Centre.

The Donaldson Hall is used for a weekly short service of reflection, and small meeting room.



There is a fully fitted kitchen, toilets and a disabled toilet. The Church Office is located off the front vestibule of the Halls.

The Halls are maintained to a high standard, and much sought after by community groups, and are used during the day and evening seven days per week.

Manse:

Our Manse is a modern detached villa, situated in a quiet street, with a garage and ample off-street parking. Well maintained gardens are to the front and rear of the property.

On the ground floor there is a large living room, dining room, kitchen, toilet & study. The upper floor has four bedrooms and the family bathroom.

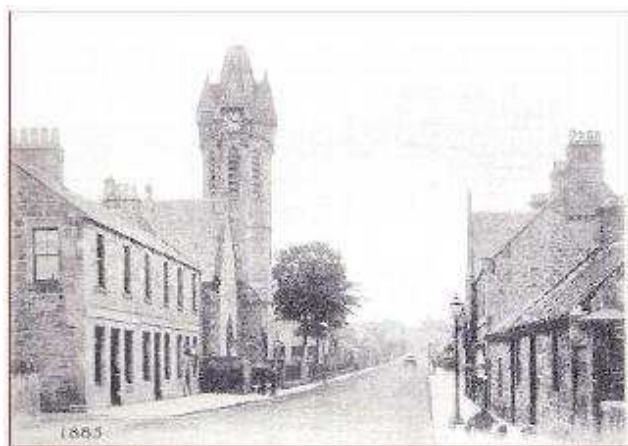
The Manse is well maintained both inside and out.



17. A HISTORY OF BONNYRIGG PARISH CHURCH

This was the first church to be built in Bonnyrigg.

Thomas Pitcairn, the then minister of Cockpen Parish, left the Church of Scotland during the disruption of 1843.



The congregation then built their church in the centre of Bonnyrigg, opening in 1845 as Cockpen United Free Church. They also built their own school opposite the church, this building now being the Church Halls.

In 1929 the Free Church re-joined the Church of Scotland and the church was renamed as Bonnyrigg parish Church.

Previous Ministers:

Rev Thomas Pitcairn	1843 - 1854
Rev James Hamilton	1855 - 1877
Rev John J MacRae	1877 - 1884
Rev Robert T Loudon	1885 - 1929
Rev Oliver Dryer	1929 - 1947
Rev Thomas N Clark	1948 - 1956
Rev Glynn R Taverner	1957 - 1962
Rev Gordon G Stewart	1963 - 1970
Rev John Nicol	1970 - 1975
Rev William Armitage	1976 - 1990
Rev John Mitchell	1991 - 2018



18. COMMUNITY PROFILE

Bonnyrigg is a town in [Midlothian, Scotland](#), eight miles (13 kilometers) southeast of [Edinburgh](#) city centre.

The town had a population of 15,677 according to the 2011 census, which includes Bonnyrigg and [Lasswade](#), as well as Poltonhall and Hopefield. This underestimates the population as since the census there have been and continues to be ongoing housing developments of some 3,000+ homes. This has greatly expanded the town.

Bonnyrigg lies on the [B704](#) (High Street)/(Dundas Street) and the [A6094](#) (Polton Street)/(Lothian Street) which cross at Bonnyrigg Toll.

Education

Bonnyrigg has several children's nurseries both council and private looking after the pre-school years.

Five primary schools serve the community, with recent re-building and a brand new school in the Hopefield estate.

Lasswade High School, which has a good education record, was also rebuilt in 2013.

Healthcare

Bonnyrigg is served by three local GP practices, all housed in a purpose built unit near the centre of Town.

The local Community Hospital (No A&E) is located on the south side of Bonnyrigg, this unit also provides the Out of Hours GP service.

There are several dental practices serving the area.

Retail

Bonnyrigg is served by many Food & Retail outlets locally and in the surrounding area.

Co-op is located in the High Street, as are several Hairdressers & Beauty Parlors, Bakery, Chemists and Newsagents.

Tesco is located on the south side of the Town on the road to Eskbank, whilst Asda, Sainsbury & Costco are nearby in Loanhead; Morrisons and Lidl are situated in Dalkeith.

There are a number of out of town shopping centers located close by in Straiton and the Fort in Newcraighall, offering a variety of retail outlets, whilst Edinburgh town centre is only a short bus ride or train journey away.

Sport

Bonnyrigg is home to the [junior football](#) club [Bonnyrigg Rose Athletic](#) who play their home games at New Dundas Park.

[Lasswade Rugby Football Club](#) was founded in 1921 and initially played in a field to the west of Dobbies Road before moving to their current ground at Hawthornden in 1974.

Lasswade High School Centre leisure facilities are open to the public daytime & evenings, the local library is also incorporated into the Lasswade High School Centre.

The local golf course is [Broomieknowe Golf Club](#). It is an 18-hole course with a par of 70.

Other Points of Interest

King George V Park in Bonnyrigg is home to the war memorial, where the community holds a Remembrance service every November.

There is also a monument to the miners leader, [Mick McGahey](#).

Bonnyrigg and Lasswade, and surrounding area have a number of very good restaurants.

Dalhousie Castle Hotel & Melville Castle Hotel are nearby, and are popular as wedding venues

Along with Lasswade, Bonnyrigg is a twin town with [Saint-Cyr-l'École](#), France.

Youth Organisations

There are many youth groups within the community:

- 51st Boys Brigade
- 14th Midlothian (Bonnyrigg) Scout Group
- Girl Guide, Brownies & Rainbows
- Army Cadet groups

Transport

The most frequent bus service is the [Lothian Bus](#) service 31 which goes from East Craig's in the west of Edinburgh via [Princes Street](#), passing Bonnyrigg Toll every 10 minutes at peak times and terminating alternately at Hopefield and [Polton](#). The X31 express service also runs from Haymarket in Edinburgh to [Rosewell](#) via Bonnyrigg Toll and Hopefield (Mon – Fri, at start and end of day).

East Coast Buses service 140 from Musselburgh to [Penicuik](#) and the Lothian Bus service 49 from Newcraighall to Rosewell also serve the town.

The Borders Bus service 339 offers a circular route running from Bonnyrigg to the Midlothian Community Hospital, Tesco, Newtongrange and Gorebridge.

The opening of the [Borders Railway](#) in September 2015 has re-connected Bonnyrigg to the national rail network via a station one mile away at [Eskbank](#).

Walking / Leisure

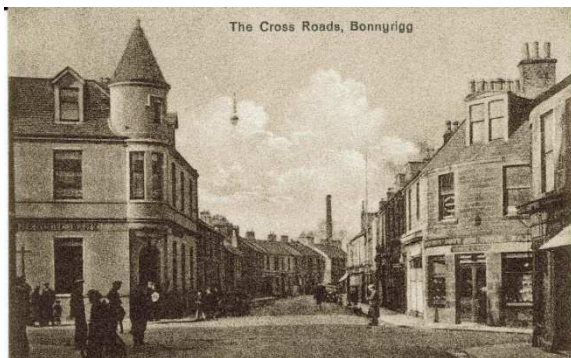
For walkers the [Penicuik–Dalkeith Walkway](#) passes close by, whilst the Pentland Hills are only a few miles outside the town and provide an excellent area for hill walking or just a leisurely stroll.

Vogrie Park just outside Gorebridge is a short drive away, providing many walks and a children's play area.

Dalkeith also has a network of walks within the Country Park and within Newbattle Abbey grounds.

Early History

Early maps of the locality show various versions of the village name. It first appears as a small hamlet on William Roy's map of c.1750 as *Bonnebrig*. From 1763, it was called *Bannockrigg* or *Bannoc Rig*. In 1817 the village is named *Bonny Ridge*, then *Bonny Rigg* in 1828, *Bonnyrig* in 1834, *Bonny Rig* in 1850 until, finally, the Ordnance Survey map of 1850-1852 standardises the name as *Bonnyrigg*.



In 1865, the villages of Bonnyrigg, Red Row, Polton Street, Hillhead and Broomieknowe combined to form the Burgh of Bonnyrigg, and then, in 1881, the village of Lasswade and part of Broomieknowe combined to form the Burgh of Lasswade.

In 1929 the two burghs joined together to form the burgh of Bonnyrigg & Lasswade. This burgh lasted for 45 years until it was abolished in 1974/75, when local government changes were introduced.

Bonnyrigg was predominately a mining village until the 1920s, while its carpet factory was demolished in 1994.

The town centre mostly dates from the 19th century, though buildings at the main crossroads were rebuilt in the 1960s.



In 2006, Bonnyrigg town centre benefited from £1.5m of environmental improvements. Natural stone paving replaced the existing concrete paving slabs in areas across the town centre and new street lighting and furniture were installed.

19. FURTHER INFORMATION

Facebook:

<https://www.facebook.com/bonnyriggparishchurch>

Our Parish Profile can be downloaded from our Website

www.bonnyriggchurch.co.uk

Informal enquiries can be made to the Interim Moderator:

Rev Ian Scott

Email: igscott50@btinternet.com

Telephone: 01875 612907

For further information, please contact the Clerk to the Nominating Committee:

Ross Whailin

Email: vacancy@bonnyriggchurch.co.uk

To whom applications should be sent along with a covering letter and CV.